

Accommodation Facilities

types:



Uitsoek (Sleeps 14)



- ✓ **Accommodation:** (A) Good quality hut/lux.tent/house with several sleeping rooms
- (B) Basic hut or tent(s) provided
- (C) Shelter against elements for sleeping or tent site only
- Toilet:** (A) Flush toilet inside hut (1:6 people) and toilet paper
- ✓ (B) Separate toilet building, flush facilities outside hut (toilet paper provided)
- (C) Pit toilet (max 50 m min 20 m from hut) or alt. hygienic system (toilet paper)
- Beds:** (A) Single / double beds only
- ✓ (B) Bunk beds OR
- (C) No beds provided
- Mattresses:** (A) Thick (10 cm) high density foam or spring
- ✓ (B) Thin
- (C) None
- ✓ **Washing:** (A) Shower and/or bath: with geyser or "donkey" pre-lit by attendant
- (B) Shower and/or bath (hot and cold with "donkey")
- (C) Shower (cold) or natural place to bath
- Braai area:** (A) Under cover barbecue, with windshield, lapa (1:10 people)
- ✓ (B) Barbeque area, covered only, with grate,
- (C) Barbeque (open) area with grate only or no fires allowed or possible
- ✓ **Fire wood provided:** (A) Ample chopped wood (also for campfire)
- (B) One only bundle for braai
- (C) Dry tree/logs with saw/axe provided or no fires allowed/possible (delete one)
- Kitchenware:** (A) Fridge/cooler and cutlery/crockery: provided
- (B) Fridge/cooler or cutlery/crockery: provided (delete one)
- ✓ (C) NOT provided
- ✓ **Kitchen:** (A) Separate "kitchen"/common room with basin and tap inside hut
- (B) Dish washing / cooking place near or adjacent to hut (with table/surface)
- (C) No separate facilities provided
- ✓ **Lighting:** (A) Electric/gas/solar
- (B) Candles/paraffin lamps or similar
- (C) None of these provided
- Heating/facilities for drying clothes:** (A) Fire place; coal/wood stove/heaters
- (B) Heating by means of fire place; coal/wood stove in common room
- ✓ (C) None of these
- Cooking facilities:** (A) Stove/hot plate/burner and kettle, pots & pans
- (B) Stove/Hot plate/burner or kettle, pots & pans
- ✓ (C) None of these

Accommodation Facilities

types:



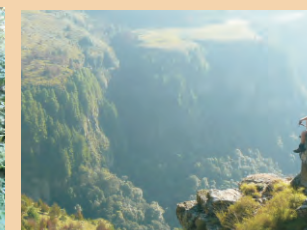
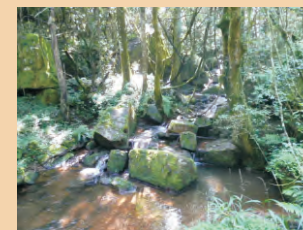
Lisabon (Sleeps 14)



- ✓ **Accommodation:** (A) Good quality hut/lux.tent/house with several sleeping rooms
- (B) Basic hut or tent(s) provided
- (C) Shelter against elements for sleeping or tent site only
- Toilet:** (A) Flush toilet inside hut (1:6 people) and toilet paper
- (B) Separate toilet building, flush facilities outside hut (toilet paper provided)
- ✓ (C) Pit toilet (max 50 m min 20 m from hut) or alt. hygienic system (toilet paper)
- Beds:** (A) Single / double beds only
- ✓ (B) Bunk beds OR
- (C) No beds provided
- Mattresses:** (A) Thick (10 cm) high density foam or spring
- ✓ (B) Thin
- (C) None
- Washing:** (A) Shower and/or bath: with geyser or "donkey" pre-lit by attendant
- (B) Shower and/or bath (hot and cold with "donkey")
- ✓ (C) Shower (cold) or natural place to bath
- Braai area:** (A) Under cover barbecue, with windshield, lapa (1:10 people)
- ✓ (B) Barbeque area, covered only, with grate,
- (C) Barbeque (open) area with grate only or no fires allowed or possible
- ✓ **Fire wood provided:** (A) Ample chopped wood (also for campfire)
- (B) One only bundle for braai
- (C) Dry tree/logs with saw/axe provided or no fires allowed/possible (delete one)
- Kitchenware:** (A) Fridge/cooler and cutlery/crockery: provided
- (B) Fridge/cooler or cutlery/crockery: provided (delete one)
- ✓ (C) NOT provided
- Kitchen:** (A) Separate "kitchen"/common room with basin and tap inside hut
- (B) Dish washing / cooking place near or adjacent to hut (with table/surface)
- ✓ (C) No separate facilities provided
- Lighting:** (A) Electric/gas/solar
- (B) Candles/paraffin lamps or similar
- ✓ (C) None of these provided
- Heating/facilities for drying clothes:** (A) Fire place; coal/wood stove/heaters
- (B) Under cover washing line
- ✓ (C) None of these
- Cooking facilities:** (A) Stove/hot plate/burner and kettle, pots & pans
- (B) Stove/Hot plate/burner or kettle, pots & pans
- ✓ (C) None of these

GREEN FLAG ACCREDITED HIKING TRAIL

Uitsoek: Houtbosloop Hiking Trail



Classification

A two-day circular, self-guiding trail

Environment: *pristine*

Accommodation: *base camp: luxury,
bush camp: rustic*

Difficulty Rating: *day 1: very difficult
day 2: moderate*

Facilities and safety: *good*



www.trailinfo.co.za

Accreditation underwritten by:
South African Hiking Trail Owners Association (SAHTOA),
Hiking Organization of Southern Africa (HOSA),
Southern Africa Tourism Services Association (SATSA),
Jacana Travel Marketing & Reservations, Boskamproetes & Eco-Trail.

Trail Facilities & Safety

Facilities:

Booking facilities and information: Well managed

Reception office: Acceptable

Road signs to start of trail: Not ideal

Access road to start: Acceptable

Trail Format: Circular

Map/guide: Map (Self-guided)

Facilities for handicapped: None

Brochure/guide: Limited

Water availability for drink/swim: Yes

Portaging: No

Catering: Not

Safety:

Parking: Safe/shade

Accommodation: Safe

Safety on Trail:

Markers: Correct

Warning signs: N/A

Water potability: Clean

Hikers' general safety (mugging): Safe

Other: (bridges, ladders, stiles, etc): Slippery

Crossings (road/river): Safe

Emergency:

Escape routes: Not marked

Telephone/cell: Partial

Medical aid/evacuation system: Available

Basic Trail Description

The Uitsoek trail is in an environment with mountains, ravines lovely indigenous forests and pine plantations. The trail begins with an up-hill section leading through pine plantations and indigenous forests.

There is a beautiful spring at the top of the ridge which can be reached by lunch-time. Another few hours walk will take you through the clivia ravine and patches of trees with very little water en route. There is a wonderful view over the escarpment from the mountains.

Day 2 winds through the hills with beautiful views down the escarpment into the valley where hikers can rest, swim and enjoy the indigenous forest and clear water streams, waterfalls and rapids. The frequent crossing of the river by means of many small bridges is a special feature of the trail.

Description of trail by means of symbols.

Technical Difficulty	Walk	Scramble (use hands)	Climb/ladder	Free Rock Climbing
Energy Rating	Easy	Moderate (Day 2)	Difficult	Extreme (Day 1)
Guiding	Guide (registered)	Guide (learner)	Local Hike Leader	Self-guided
Catering	Fully Catered	Semi-catered	Self Catered	No overnight
Trail format	Linear	Circular	Network (base camp)	Open-ended
Trail type	Ramble (max. 3 h)	Day Walk	Overnight Trail	Portaged
Path character (accessibility)	Handicapped Wheelchair, Blind	Constructed Footpath/trail	"Free Range" with guide	"Free Range" with GPS
Accommodation	Excellent	Luxury (base camp)	Standard	Rustic (bush camp)
Environmental Character	Pristine	Natural	Rural	Semi-urban
Facilities	Excellent	Acceptable	Poor	No facilities
Environmental Education	Curriculum Based	Guided/Brochure	Standard info on Trail	No Env. Education
Safety	Safe	Safe - heed warnings	Risky	Unsafe

 Relevant category for this particular trail

Contact / Booking Information

Bookings

Uitsoek: Houtbosloop

Nadia Krugel; Reservationist

e-mail: ecotour@safcol.co.za or nadia@kif.co.za

tel: 012 481 3703

fax: 012 481 3696

www.komatiecotourism.co.za